



The Bellefonte Lions Club



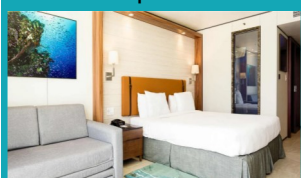
St. Maarten
January 15 - 22, 2022



Sonesta Maho Beach Resort, Casino & Spa

A picturesque Caribbean setting offering an array of dining and entertainment options for all ages. Choose from five indoor and al fresco dining options plus pizzeria, five bars including Oasis Pool swim-up bar, Beach House Kids Club, Teen Zone, and a dazzling entertainment program, all included!

Superior



Limited Views, Located on floors 3-5

\$2,094pp

Garden View



Private Balcony with view of Resort's Gardens
Located on floors 1-3

\$2,156pp

Premier Island View



Private Balcony with views of Island, Maho Village or Golf Course
Located on floors 6-10

\$2,188pp

Pool/Ocean View



Private Balcony with views of Pool, Garden or Ocean
Located on floors 4-5

\$2,234pp

Premier Ocean View



Private Balcony with Ocean View Overlooking Oasis Pool or Maho Beach
Located on floors 6-10

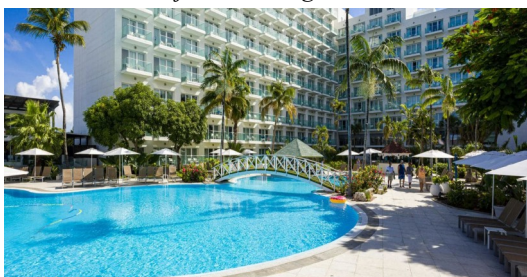
\$2,301pp

**Prices are per person based on double occupancy and includes air.
A discount of 3.5% if paid by check. **Taxes are subject to change*

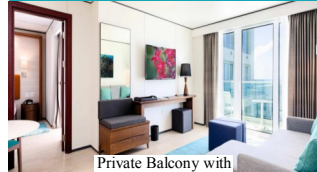
SUITES

All rooms and suites feature:

Private balcony
Flat screen TV
Phone with voicemail
Mobile device USB charging station
Wireless connect music player
In-room climate control
Iron and ironing board
Mini-fridge: water/soda
Coffee maker with coffee and tea
In-room safe
Hair dryer and bath amenities
One king/two double beds
Sitting area with coffee table & chairs
Free Wi-Fi
Electronic room key
Smart glass bathrooms
(daylight/switchable tint for privacy)



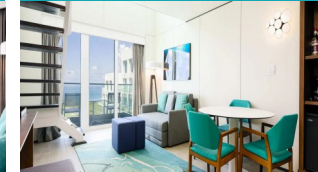
Deluxe 1 Bedroom



Private Balcony with Garden, Pool or Ocean View
Located on floors 1-10

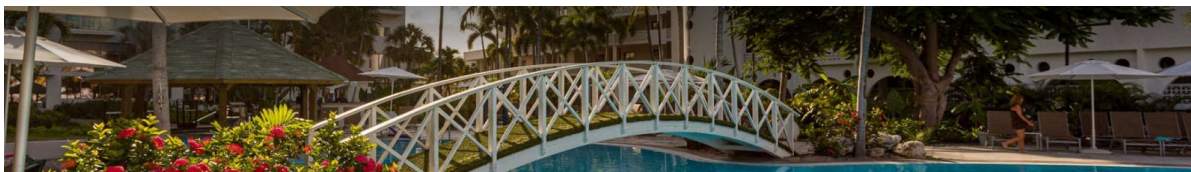
\$2,602pp

Loft



Private Balcony with Ocean Views
Located on floors 8-9

\$2,871pp



FLIGHT ITINERARY NON STOP

Date	Flight #	Departs	Arrival
Jan 15, 2022	UA1629	Newark 8:47 AM	St. Maarten 2:10 PM
Jan 22, 2022	UA1880	St. Maarten 3:10 PM	Newark 7:00 PM

These United Airlines flights are included in prices above but does not include luggage:
Checked luggage \$35.00 for the first and \$45.00 for the second bag each way

Optional flights: **Jet Blue** (includes 2 checked bags each way). Adds \$52.00pp to the price

Jan 15, 2022	B6 995	Newark 8:45 AM	St. Maarten 1:56 PM
Jan 22, 2022	B6 96	St. Maarten 3:35 PM	Newark 7:25 PM

Airline and flight times are subject to change at any time

Cost Includes:

Round trip United Airlines flights from Newark (non-stop), Airport/Resort Transfers in Sint Maarten, 7 nights at the Sonesta Maho Beach resort, Casino & Spa All Inclusive (Superior Room) and luggage portage at resort.

Not Included:

Local Transfers, Luggage fee, St. Maarten Covid Insurance (\$30 per person-all are required to have)

Central PA bus transfers will be offered as a separate option



For more Information contact Nittany Travel:
E-mail: raym@nittanytravel.com

570-748-6611 | 800-326-9342 | Direct: 570-213-5632
www.nittanytravel.com

Book Online

www.nittanytravel.com
Click on this group and click BOOK NOW

TERMS AND CONDITIONS

TRAVEL DOCUMENTS: You are responsible for obtaining all travel documents as well as compliance with Customs and Immigration responsibilities. You will be required to comply with all security measures imposed by governments, which may change from time to time. We will endeavor to provide you with notice of measures which may affect you, but complying with any such requirements is your responsibility.

All travelers will need a valid passport.

RESPONSIBILITY: Nittany Travel, operator of the tour herein outlined, its subsidiaries and/or its associated agents act as agents only for all services and disclaim any liability for property loss or damage and/or any loss of services which may be sustained on account, or arising out of, by reason of or while engaged on any tour whether due to ownership, maintenance use, operation or control of any automobile, bicycle, boat, vehicle, inn, common carrier, or otherwise caused by failure or delay or by any transportation company due to any cause whatsoever occurring during a tour under its management, sponsorship, procurement or otherwise. All tickets, coupons, and orders are furnished and issued subject in all respects to these terms and conditions and to any and all terms and public carriers for whom Nittany Travel acts solely as agent. Nittany Travel reserves the right in its discretion to alter or omit any part of the itinerary or change any space, reservation, feature and/or means of conveyance without notice for any reason whatsoever and without allowance or refund, but the extra cost if any resulting therefrom must be held responsible for any act, omission, or event during the time passengers are not on board their carriers or conveyance. The passage contract in use by carriers concerned, when issued shall constitute the sole contract between the transportation companies and the purchasers of these tours and/or passengers. All rates are subject to change without notice. We reserve the right to cancel any tour and refund the full amount to the passenger.

ALL RATES ARE BASED ON TARIFFS IN EFFECT AT THE TIME THE TOUR WAS PLANNED AND ARE SUBJECT TO CHANGE IN THE EVENT OF AN ADJUSTMENT HEREIN WITHOUT PRIOR NOTICE.

This brochure is considered part of the terms and conditions of purchase.

NITTANY TRAVEL CHARGES \$50 PER PERSON TO CANCEL: all additional payments are non refundable

Bellefonte Lions Club - St. Maarten 7 Nights January 15-22, 2022

List your Legal Name as it appears on **Passport**. Incorrect names could be denied boarding.

Passenger 1	First Name	Middle Name	Last Name	Date of Birth / /
Passenger 2	First Name	Middle Name	Last Name	Date of Birth / /
Passenger 3	First Name	Middle Name	Last Name	Date of Birth / /
Passenger 4	First Name	Middle Name	Last Name	Date of Birth / /

Home Address	City	State	Zip
Best Number for Pass 1 <small>Home Work Cell</small>	Email Address - Pass 1	Email Address - Pass 2	
Best Number for Pass 2 <small>Home Work Cell</small>	Emergency Contact Name	Phone	

Room Choice

- | | |
|--|--|
| <input type="checkbox"/> Superior \$2,094pp | <input type="checkbox"/> Premier Ocean View \$2,301pp |
| <input type="checkbox"/> Garden View \$2,156pp | <input type="checkbox"/> Dlx 1 Bedroom Suite \$2,602pp |
| <input type="checkbox"/> Premier Island View \$2,188pp | <input type="checkbox"/> Loft Suite \$2,871pp |
| <input type="checkbox"/> Pool/Ocean View \$2,234pp | |

Single & Triple Rates available upon request

Bed Selection

- ☐ King ☐ Double

Do you have any special needs (wheelchair, etc)? List them here

Round Trip Local Transfers

- Offered at a later date, price will be determined about a month prior to traveling
- ☐ Yes, I have interest in the round-trip motor coach to Newark airport
- ☐ No, I will provide my own round-trip transportation to Newark airport

Flight Options

- ☐ United Airlines - included in current price and you pay for baggage
- ☐ Jet Blue - add \$52 per person but bags are included

Travel Protection

NITTANY TRAVEL STRONGLY ENCOURAGES THE PURCHASE OF TRAVEL PROTECTION

Travel Protection helps provide coverage for unexpected circumstances and helps protect your trip and your investment. Cost and coverage varies by age and trip cost so this will be discussed before finalizing your booking if you are interested.

 I/We wish to purchase Travel Protection

 I/We decline to purchase Travel Protection

Form of Payment

Please indicate how you wish to pay your **\$500/person NON REFUNDABLE** reservation deposit (due at time of booking & Subject to change):

Final payment due October 1st, 2021

Credit Card #	<input type="checkbox"/> Personal Check	<input type="checkbox"/> Cash/Money Order	<input type="checkbox"/> Credit Card
<div><div></div><div></div><div></div><div></div><div></div><div></div><div></div><div></div><div></div><div></div><div></div><div></div><div></div><div></div><div></div><div></div><div></div><div></div><div></div><div></div><div></div></div>	Expiration Date:	Security Code:	
Name as it appears on Card:	<div><div></div><div></div><div></div><div></div><div></div><div></div><div></div><div></div><div></div><div></div><div></div><div></div><div></div><div></div><div></div><div></div><div></div><div></div><div></div><div></div><div></div></div>	<div><div></div><div></div><div></div><div></div><div></div><div></div><div></div><div></div><div></div><div></div><div></div><div></div><div></div><div></div><div></div><div></div><div></div><div></div><div></div><div></div><div></div></div>	

Please sign stating that you have read and agree to the Terms and Conditions above.

If you have any questions, please contact Ray direct at 570-213-5632